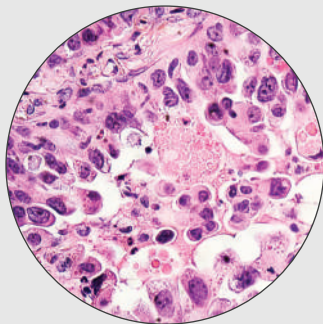
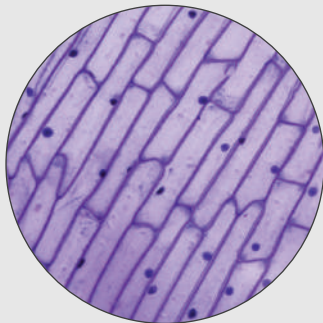


# ADVANCED BINOCULAR MICROSCOPE

## METZ – 5000 BM (SUPREME)



### SPECIFICATIONS

Magnification	40x to 1000x
Observation	Seidentopf Binocular Head inclined 30° rotatable at 360° and diopter adjustment ring on ocular tube (+/-5) with interpupillary distance from 48mm to 75mm.
Eye Pieces	(Anti fungus coated) 10x (paired) F.O. V 20mm.
Objectives	(Anti Mold and Anti fungal coated). S Plan Achromatic 4x, 10x, 40x (S.L.) & 100x Oil (S.L.)
Mechanical	Co-axial Focusing System. Pre Focusing Lever & Tension Adjustment Ring. Reverse angle quadruple nosepiece revolves on ball bearing. Double plate mechanical stage size 140mm X 132mm having low positioned co-axial controls. Coarse stroke 37.7mm/rotation, fine division 0.002mm, Cross travel 78mm X 54mm.
Sub – Stage Condenser	Abbe Condenser N.A. 1.25 with adjustable iris diaphragm
Illumination System	The illuminator incorporated 3W LED lamp and has adjustable brightness

**METZER OPTICAL INSTRUMENTS PVT. LTD.**

C-21, GURU NANAK NAGAR, JUNCTION ROAD, MATHURA – 281001

[www.metzlab.com](http://www.metzlab.com)
[info@metzlab.com](mailto:info@metzlab.com)
[+91 9897000955](tel:+919897000955)